



An agency dedicated to enabling PwDs, set up in July 2013.

- Provides information & referral services.
- Provides grants & support for PwDs & caregivers.
- Improves training & job options for PwDs.

[www.sgenable.sg](http://www.sgenable.sg)



# LOOKING AHEAD

We are making progress under the Enabling Masterplan 2012-2016. As we roll out new initiatives, we will continue to review existing ones.

We welcome further feedback from PwDs, families, employers, caregivers, service providers and the public at [msf\\_email@msf.gov.sg](mailto:msf_email@msf.gov.sg) or 6355-5000.

For more info, please visit [www.msf.gov.sg/enablingmasterplan](http://www.msf.gov.sg/enablingmasterplan) or [www.sgenable.sg](http://www.sgenable.sg)

March 2014



**MSF**  
MINISTRY OF  
SOCIAL AND FAMILY  
DEVELOPMENT

## RAISING AWARENESS



### UN CONVENTION on the RIGHTS of PERSONS with DISABILITIES

- Singapore accepted the Convention in July 2013.
- Promotes equal treatment of PwDs, with dignity & respect.



# ENABLING MASTERPLAN

## 2012 - 2016

## Progress Report

See how the Enabling Masterplan (EM) is helping persons with disabilities (PwDs) across their various life stages and different aspects of daily living.



The EM is a 5-year national roadmap to build a more inclusive society, in which persons with disabilities can be integral and contributing members, empowered to reach their potential.

Our journey towards this vision relies on the people, public & private sectors working together.

## EARLY INTERVENTION

- More learning & therapy services.
- Better support in preschools.
- Higher subsidies, more affordable services.

Helping children with special needs early improves long-term outcomes for them and their families.



- **Early Intervention Programme for Infants and Children (EIPIC)** provides learning & therapy services for preschool children with moderate to severe disabilities. Has grown from supporting 700 children in 2006, to 2100 children in 17 centres now. Will grow to 2700 places in 2015.
- From Oct 2014, government will increase base subsidy for EIPIC from \$300 to \$500 a month. Additional subsidy will be extended to low and middle-income households (up to 80<sup>th</sup> income percentile).
- **Development Support Programme (DSP)** provides learning support & therapy for children with mild developmental needs, so they can make a smoother transition to primary school. Has helped over 1000 children in 200 preschools since May 2012.
- **Resource kits** to help parents monitor their child's growth & development:



Health Booklet



'Healthier Child, Brighter Future'



'Care & Development' Resource Kit

## EDUCATION

- Improved curriculum & facilities.
- Better trained teachers.
- Greater involvement of parents.

The Enabling Masterplan calls for more support for **Special Education (SPED) schools**, which are largely run by Voluntary Welfare Organisations and have about 5000 students. Progress made in:



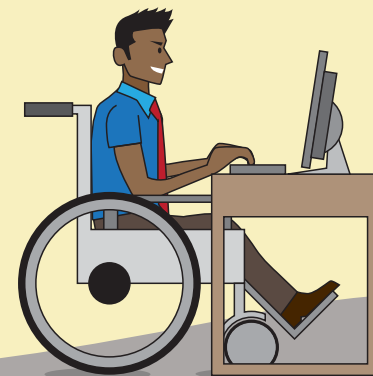
- Improving curriculum & vocational training.
- Equipping students for living, learning & working in the 21st century.
- Expanding school facilities.
- Better training, professional development & retention efforts for teachers.
- Curriculum Leadership Teams & professional learning for teachers in all schools.
- Funding for schools to involve parents in their children's education.

## EMPLOYMENT

- More training & job options.
- Encouraging employers to hire.

Employment helps PwDs lead more fulfilling and independent lives.

- SG Enable works with VWOs & employers to facilitate training & expand job options.
- **Open Door Fund (ODF)** to help employers pay for job re-design, workplace modification, training & integration for employees with disabilities.
- **Workfare Income Supplement (WIS) & Special Employment Credit (SEC)** extended to PwDs and their employers from 2012.
- 4500 employers hiring 5700 PwDs have benefitted from SEC.

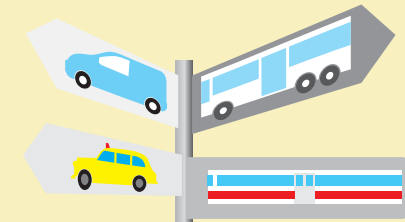


## ADULT CARE

- More day-care & residential care services.
- Helping families care for PwDs in their own homes.

### Care Services

- **Day Activity Centres (DAC)** provide care & skills training for adults with higher care needs. 500 new places by 2020, of which 140 will be added in 2014. To provide more options, government funding extended in 2013 to part-time use.
- **Drop-in Disability Programme (DDP)** piloted at 4 Senior Activity Centres in 2013, so PwDs with minimal care needs can remain socially engaged, and caregivers provided with a short respite.
- **Adult Disability Homes** – 1000 new places by FY2018, of which 60 will be added in 2014. Standards of care will be improved, and licensing will be introduced in 2016.



## ACCESSIBILITY

- Transport
- Buildings
- Technology



### More Affordable Transport

- **Public Transport Concession** for PwDs from Jul 2014.
- **VVO Transport Subsidy** from Jul 2014 for PwDs attending government-funded centre-based services.
- **Taxi Subsidy Scheme** from Oct 2014 for PwDs not able to travel to place of work / study by public transport.

### More Accessible Public Transport

- All MRT / LRT stations, bus interchanges and 96% of bus shelters now wheelchair-accessible. By 2020, all buses too.
- By 2015, ~500 pedestrian crossings with 'Green Man +' function for alerts & longer crossing times.
- Government grant for high-backed wheelchair-accessible London Cabs.

### Friendlier Built Environment

- Improved accessibility through New Code on Accessibility for the Built Environment introduced in Aug 2013.
- Continued upgrading of public buildings & HDB estates, including lift access to every floor.
- \$40m **Accessibility Fund** for upgrading older private buildings.

### Technology & Information Access

- **Assistive Technology Fund** – Subsidy doubled in 2012 for purchase of mobility / communication devices for work / study.

### Home Care

- **Foreign Domestic Workers Grant** of \$120 a month introduced in 2012 to help eligible families who need the help of Foreign Domestic Workers to care for PwDs.
- **Foreign Domestic Workers Levy Concession** increased in 2013 to \$145 a month.
- \$200 annual **Caregivers Training Grant** to attend training on care of PwDs.

[www.silverpages.sg](http://www.silverpages.sg)

## FINANCIAL SECURITY



- Helping PwDs & caregivers plan for the future.

- **MediShield** extended to congenital & neonatal conditions for children born from 1 Mar 2013. Children from low-income families born with these conditions before Mar 2013 can benefit from **Medifund Junior**.
- **Special Needs Trust Company (SNTC)** A government-funded trust management service for PwDs. Funding increased in 2012. [www.sntc.org.sg](http://www.sntc.org.sg)
- **Special Needs Saving Scheme (SNSS)** started in Feb 2012 to allow PwDs to receive monthly payouts from their parents' CPF accounts after their parents pass on.